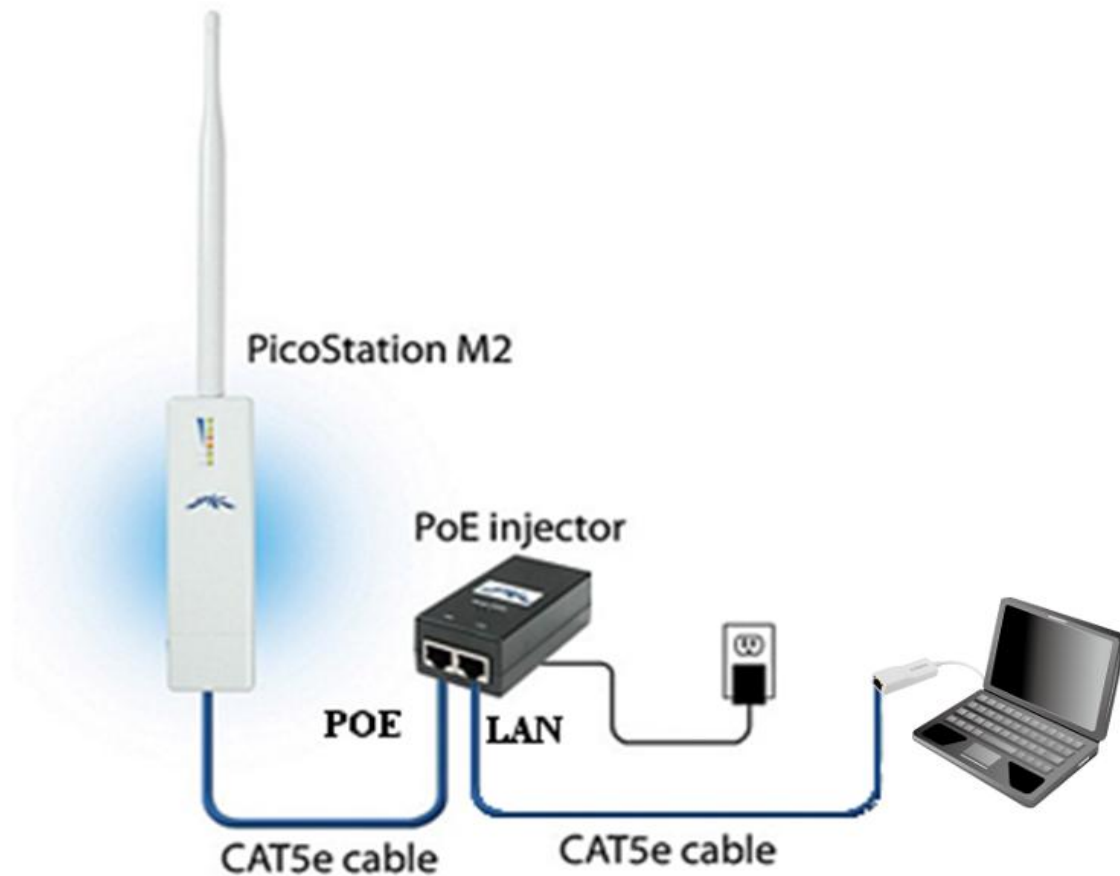


EMC Store Side Communications Quick Start Guide (Revision 2)



BLAIR COMPANIES

ARCHITECTURAL IMAGING
SIGNS • FIXTURES • LIGHTING

5107 Kissell Avenue

Altoona PA 16601

814-949-8287

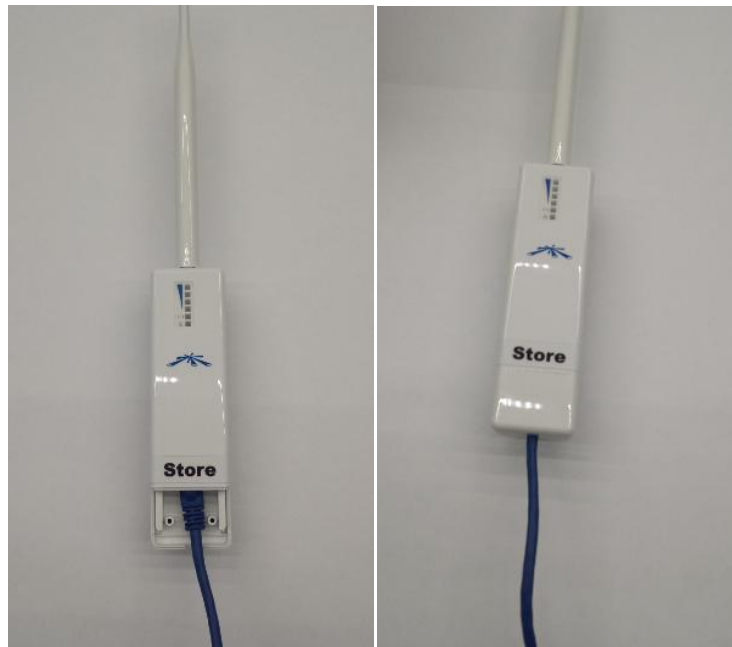
blaircompanies.com

1) Plug the CAT5 cable labeled POE into the POE port of the POE injector.



2) Plug the other end of the CAT5 labeled POE cable into the ubiquity access point.

- Ensure the cable is securely connected.
- Replace the cover



3) Plug the CAT5 cable labeled LAN into the LAN port of the POE injector.



4) Plug the other end of the CAT5 cable labeled LAN into the USB Ethernet adapter.

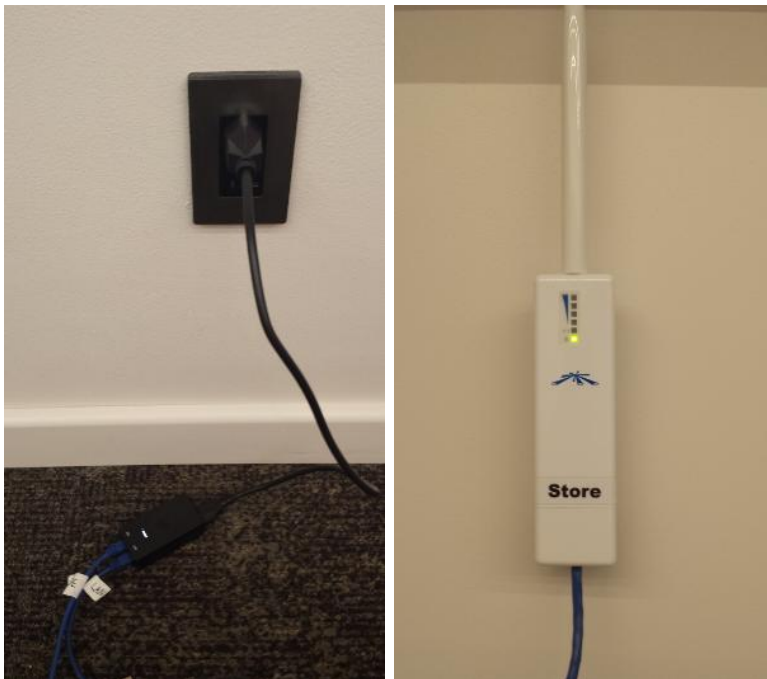


5) Plug the USB Ethernet adapter into the computer.



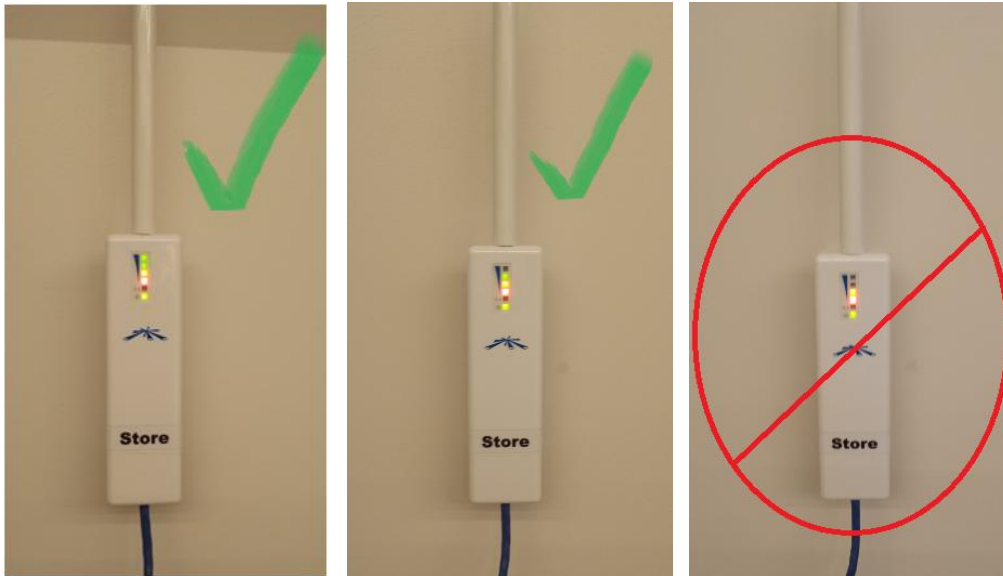
6) Plug the AC power cord into a wall outlet.

- The power indicator light on the POE should turn on.
- The power indicator light on the ubiquity should turn on (the green light on the bottom).



7) The store side Ubiquity will automatically connect to the sign when they are both powered on.

- The top four LEDs indicate an established connection and signal strength.
- At least one of the green signal strength LEDs should be on to provide reliable communication with the sign.



8) The provided laptop will be preconfigured to work with the USB Ethernet adapter. ColorSpace and The Scheduler should now be able to send files to the Electronic Message Center.

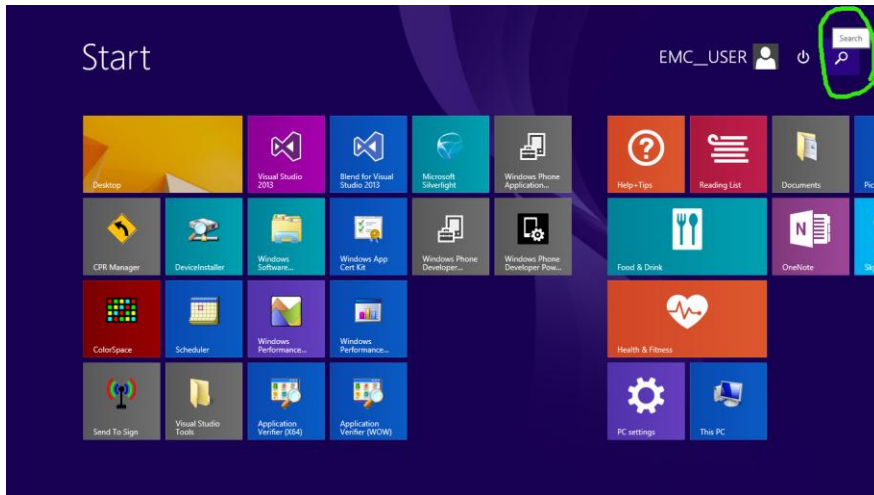
9) If this is a new system that came with a new laptop configured by Blair Companies, you may skip step 10.

10) If this is a replacement communications for an existing laptop that previously had a Ubiquity communications, Configure the Edimax USB network adapter to a static IP Address by following the instructions on the following pages.

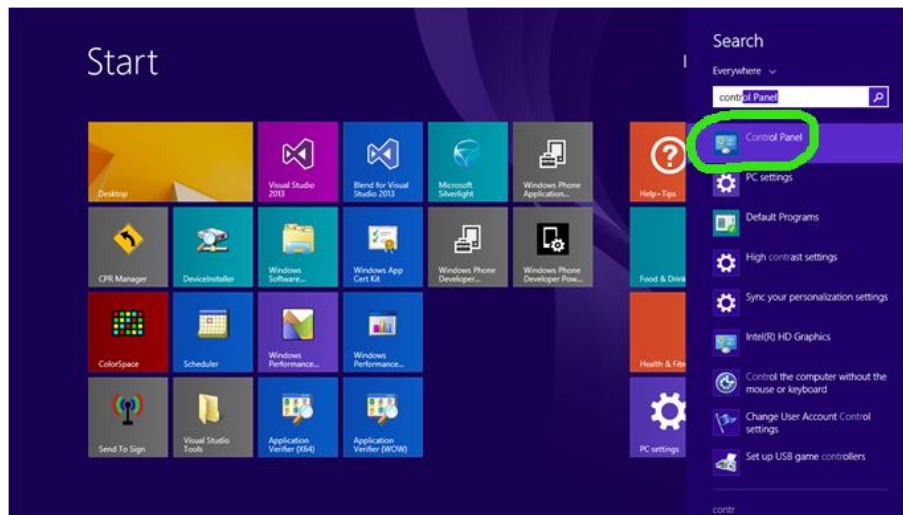
Windows 8 and 8.1

For Windows 7 see Page 10.

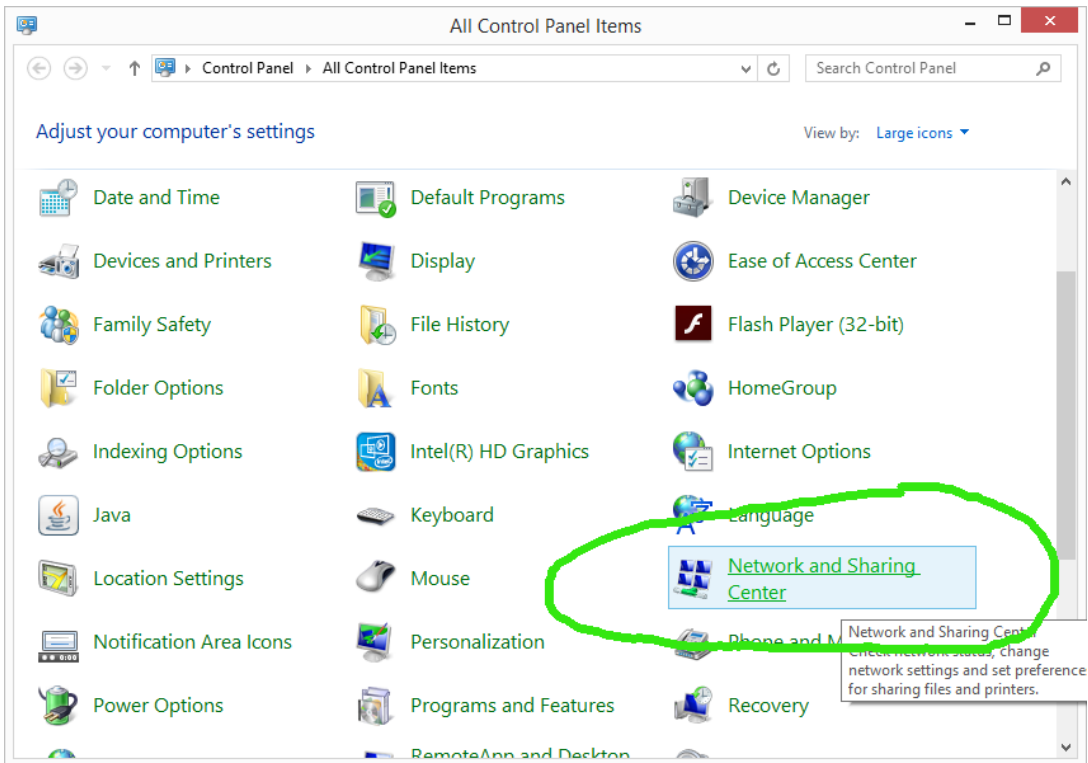
1. Press the windows key on the bottom left hand corner of your keyboard to open the Start Screen
2. Click "Search" at the right side of the screen.



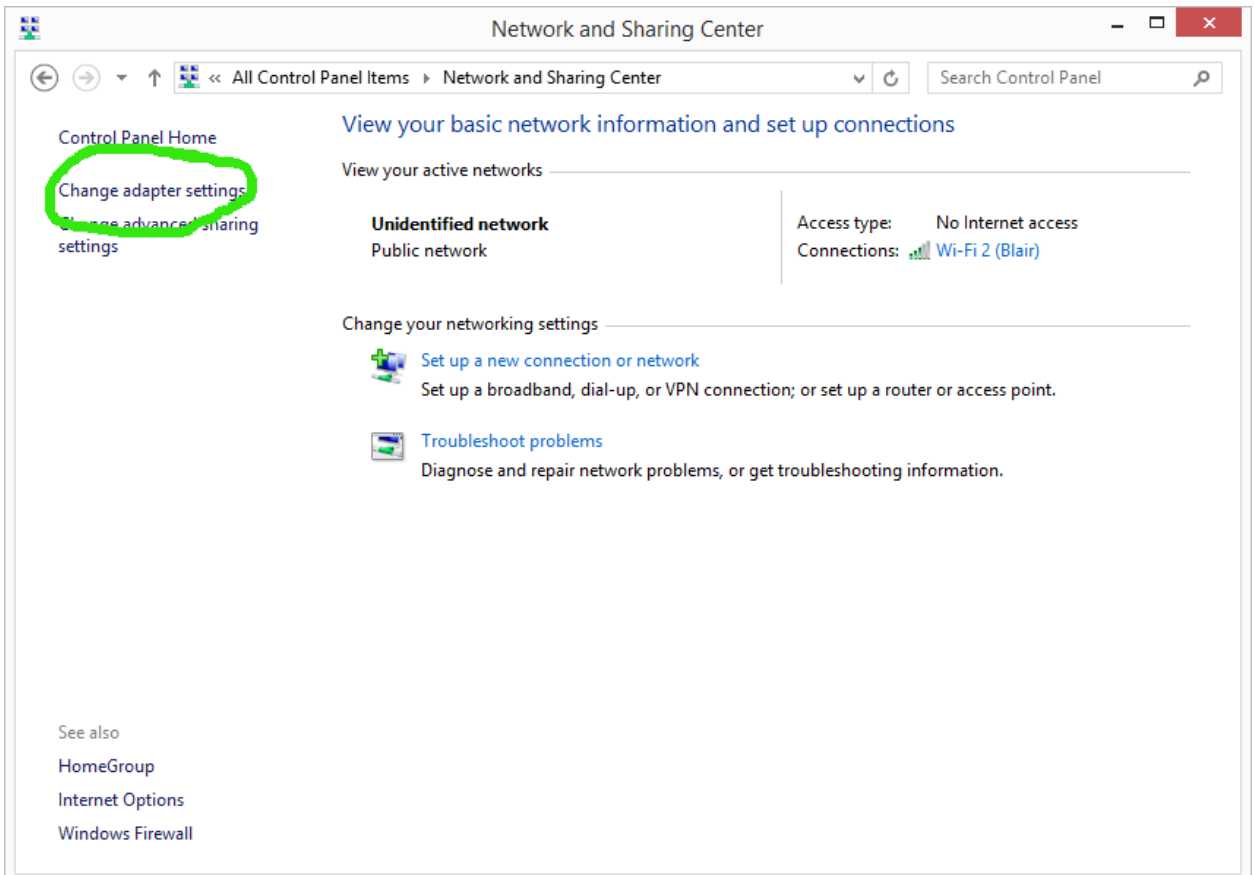
3. Type "Control Panel" into the search box. Then click on the Control Panel App.



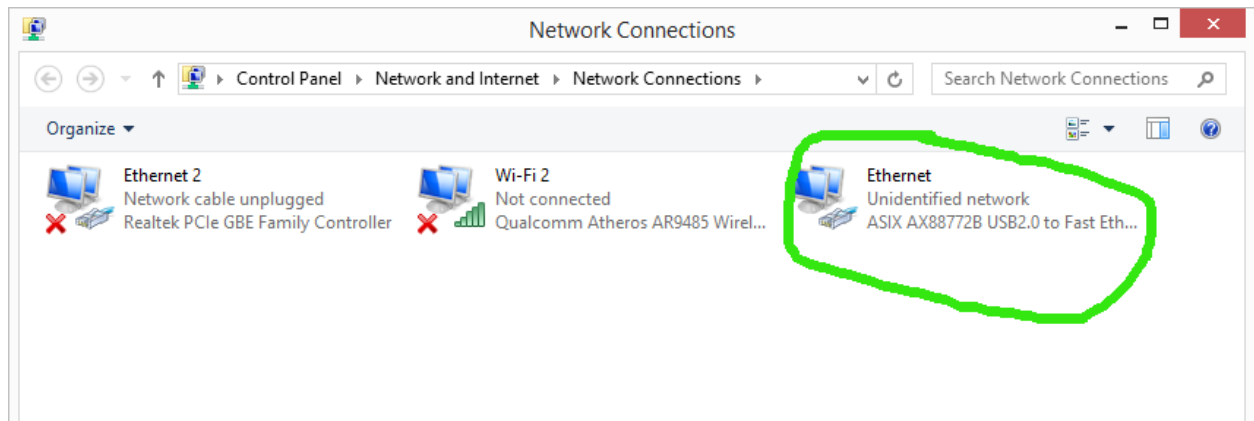
4. In the Control Panel, Click Network and Sharing Center.



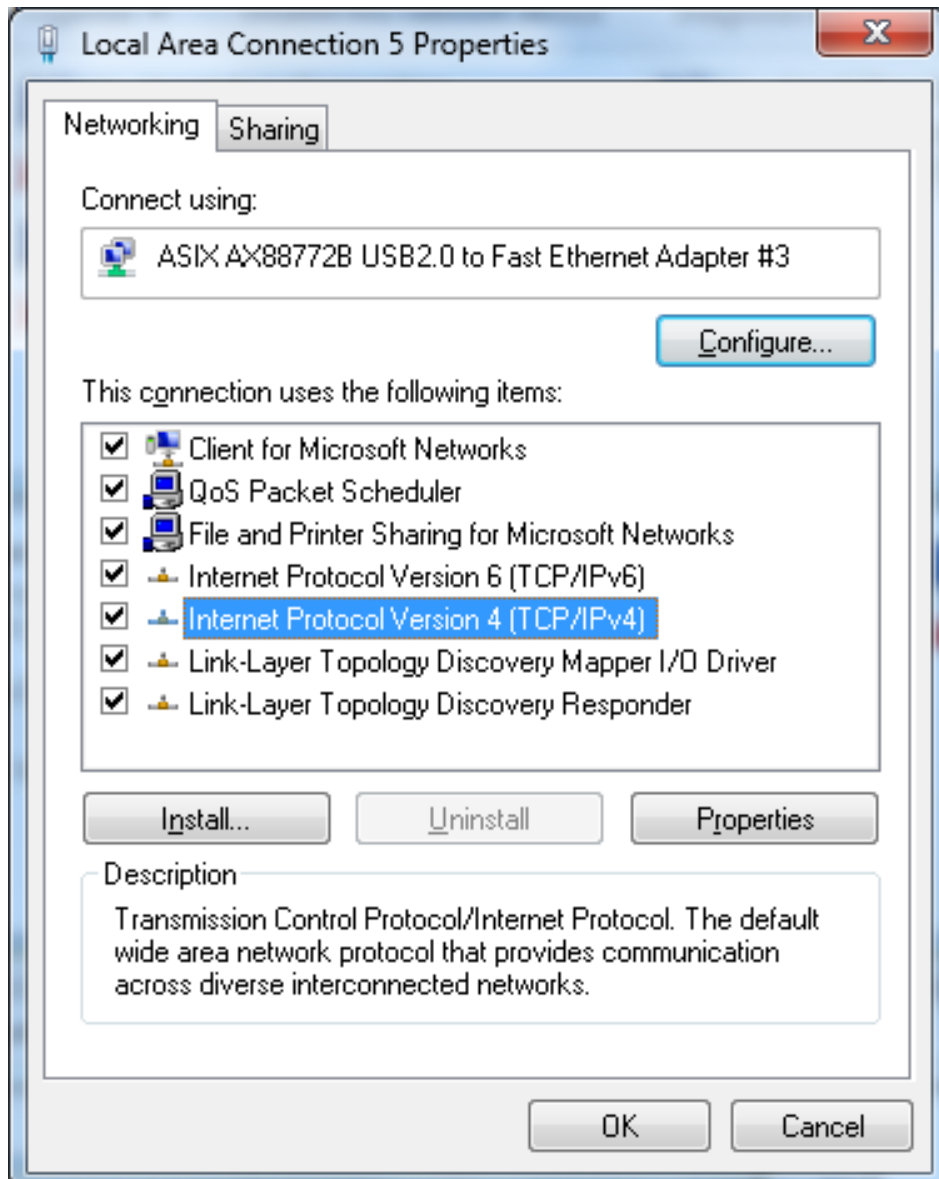
5. In the "Network and Sharing Center", click "Change Adapter Settings".



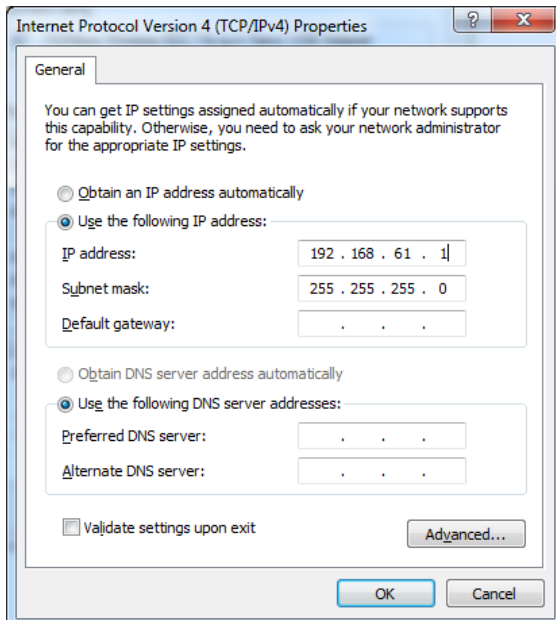
6. Double click on the usb Ethernet adapter. It is the one that says something like “ASIX USB2.0 to Fast Ethernet Adapter”, as shown below.



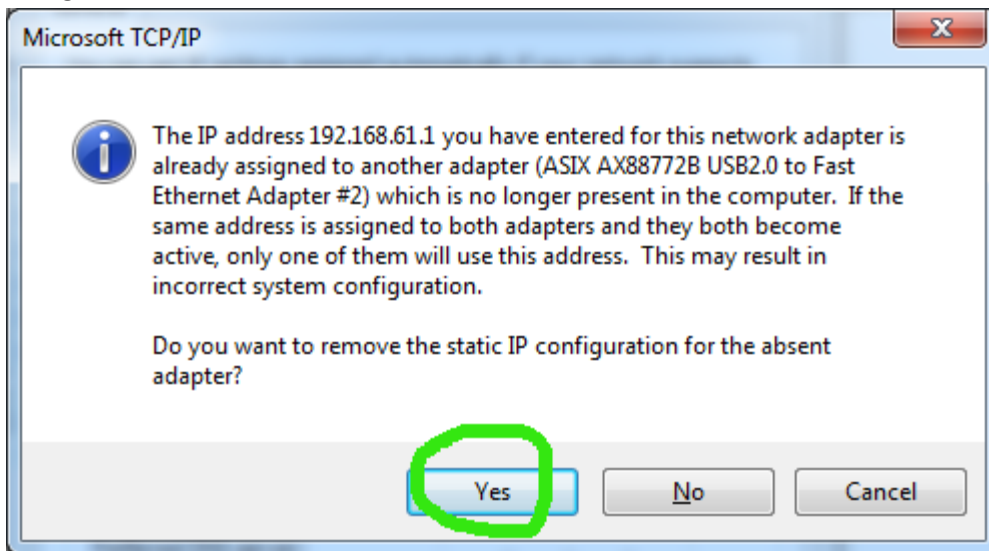
7. Double click on Internet Protocol Version 4 (TCP/IPv4). Note you may have to scroll down.



8. A new window shows up as on the right. Change the settings to “Use the following IP address”

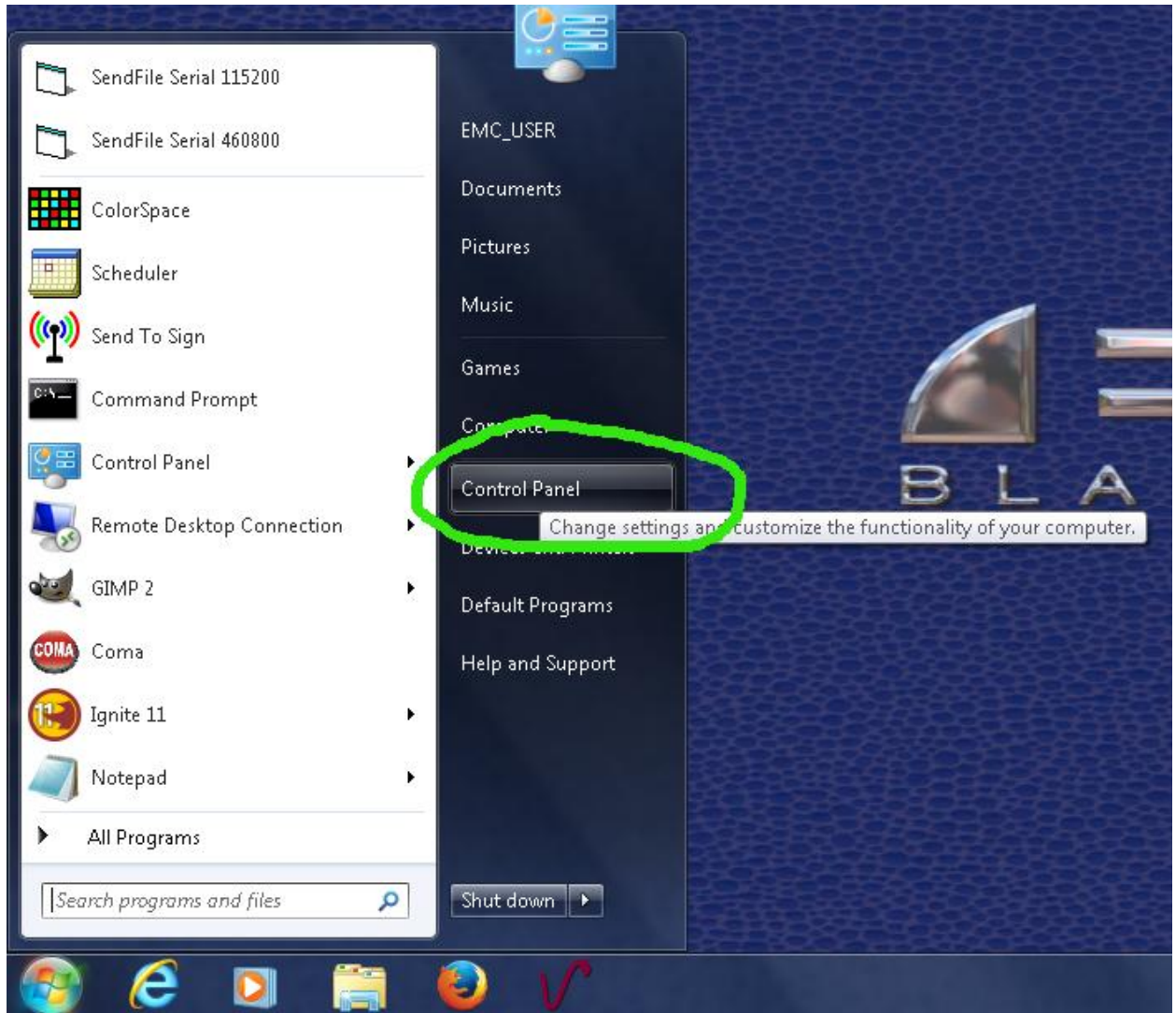


- o Enter 192.168.61.1 for the IP address
 - o Enter 255.255.255.0 for the subnet mask
 - o Do not enter anything for the Default gateway
 - o Press OK, then OK again, and close the Network Connections window.
- If you previously had another usb adapter configured for 192.168.61.1, Windows may prompt you asking if you want to remove the disconnected device. You may click yes to remove the configuration for that device.

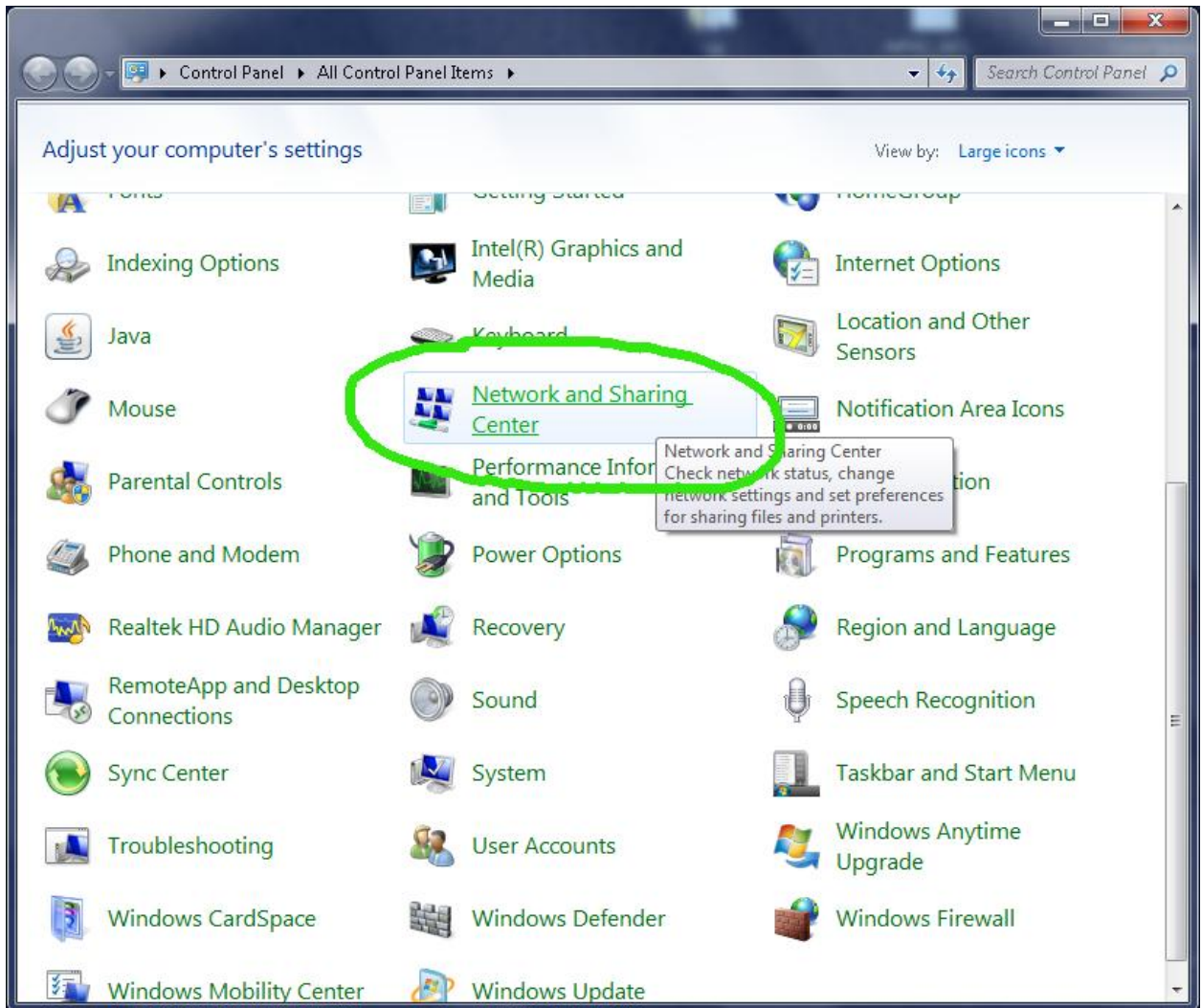


Windows 7

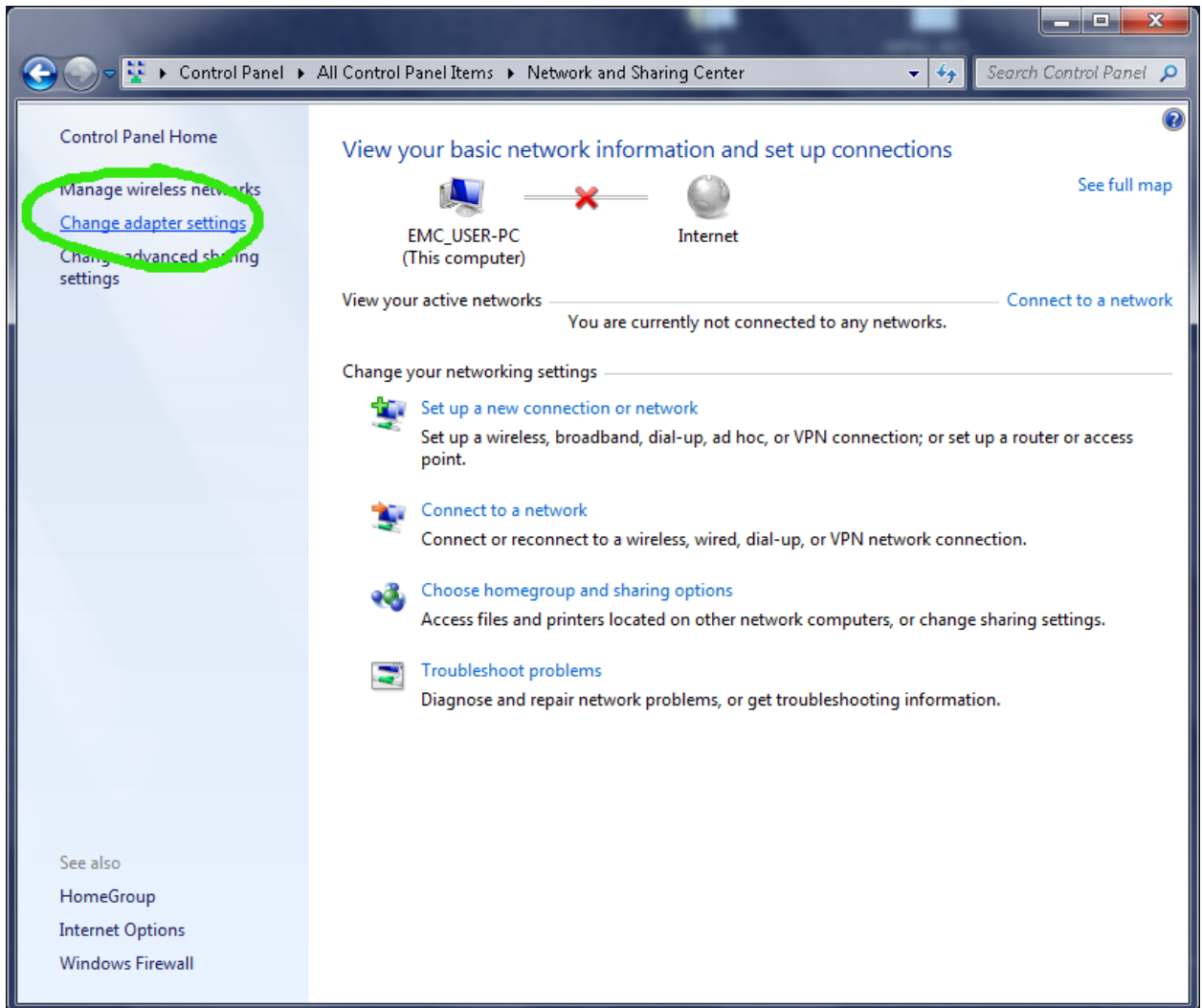
1. Goto the start menu and click on the Control Panel



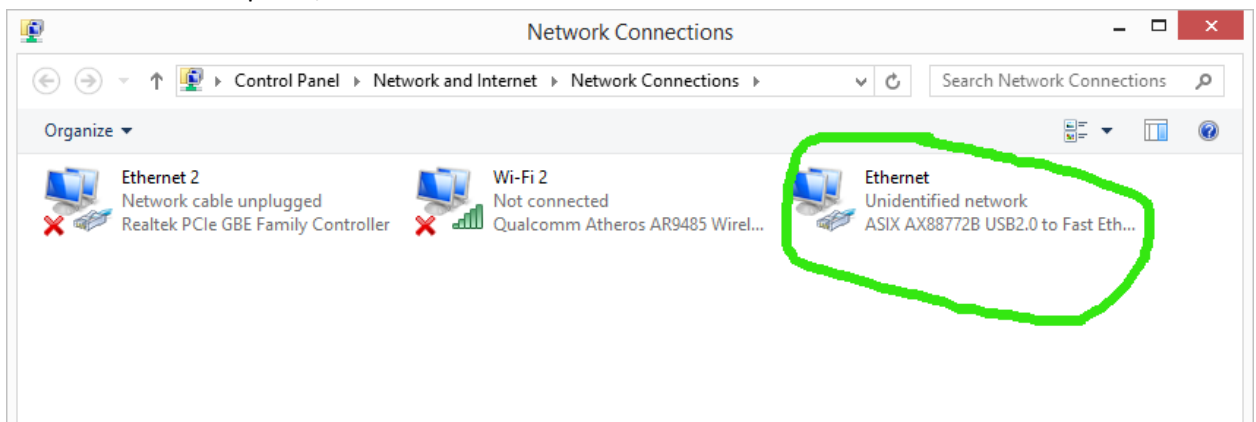
2. Click on "Network and Sharing Center."



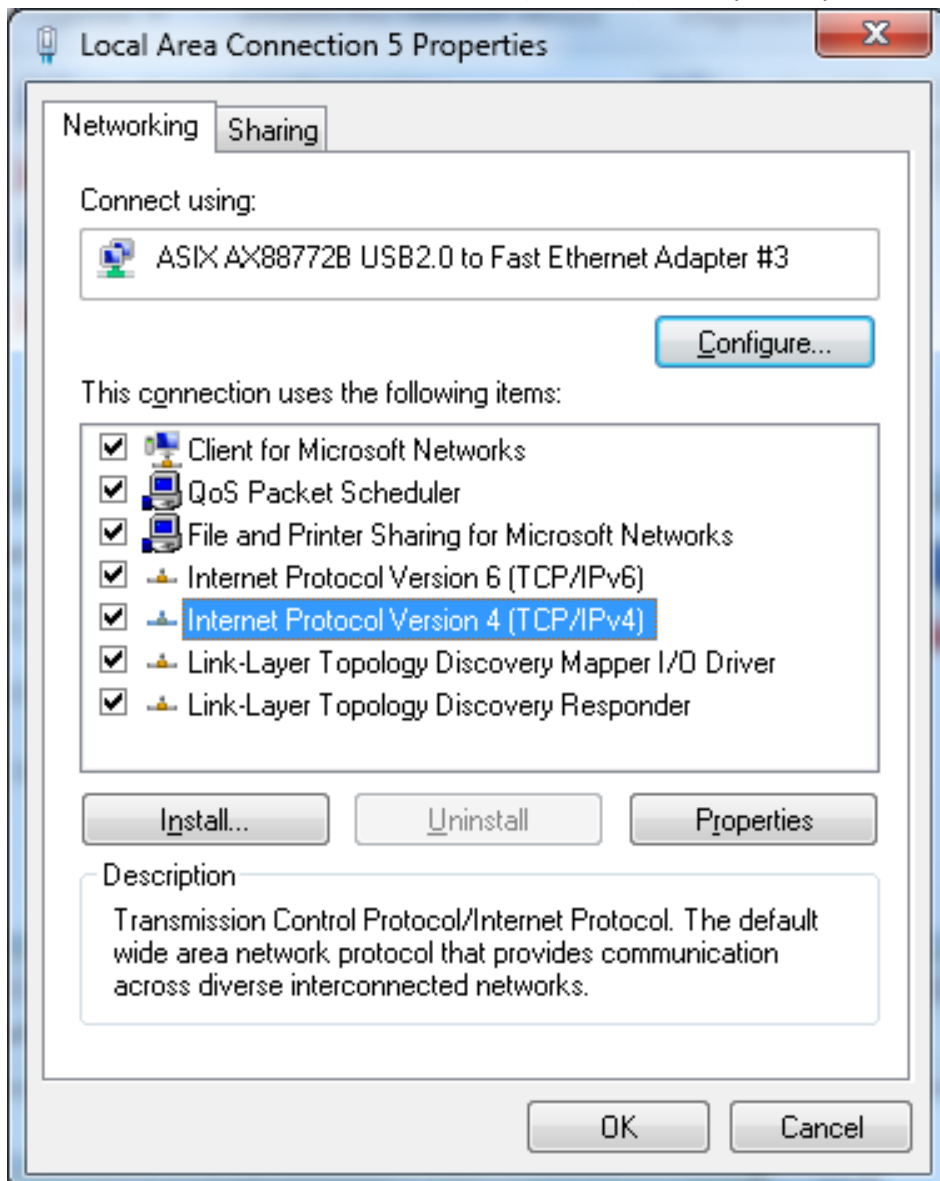
3. Click on “Change Adapter Settings”



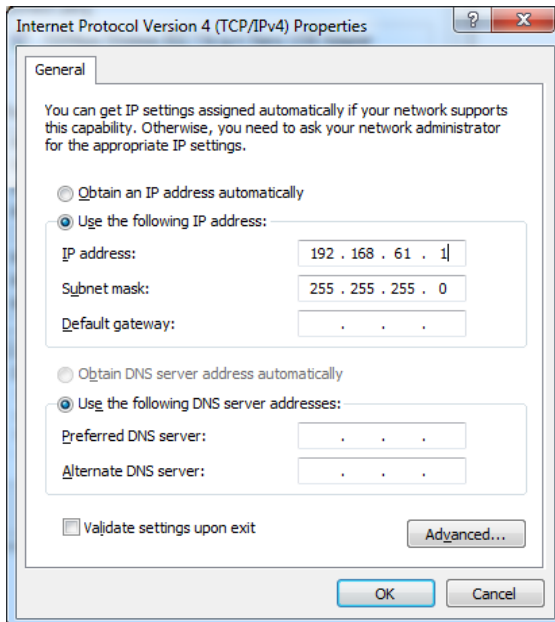
4. Double click on the usb Ethernet adapter. It is the one that says something like “ASIX USB2.0 to Fast Ethernet Adapter” , as shown below.



5. Double click on Internet Protocol Version 4 (TCP/IPv4). Note you may have to scroll down.



- A new window shows up as on the right. Change the settings to “Use the following IP address”



- Enter 192.168.61.1 for the IP address
 - Enter 255.255.255.0 for the subnet mask
 - Do not enter anything for the Default gateway
 - Press OK, then OK again, and close the Network Connections window.
- If you previously had another usb adapter configured for 192.168.61.1, Windows may prompt you asking if you want to remove the disconnected device. You may click yes to remove the configuration for that device.

